

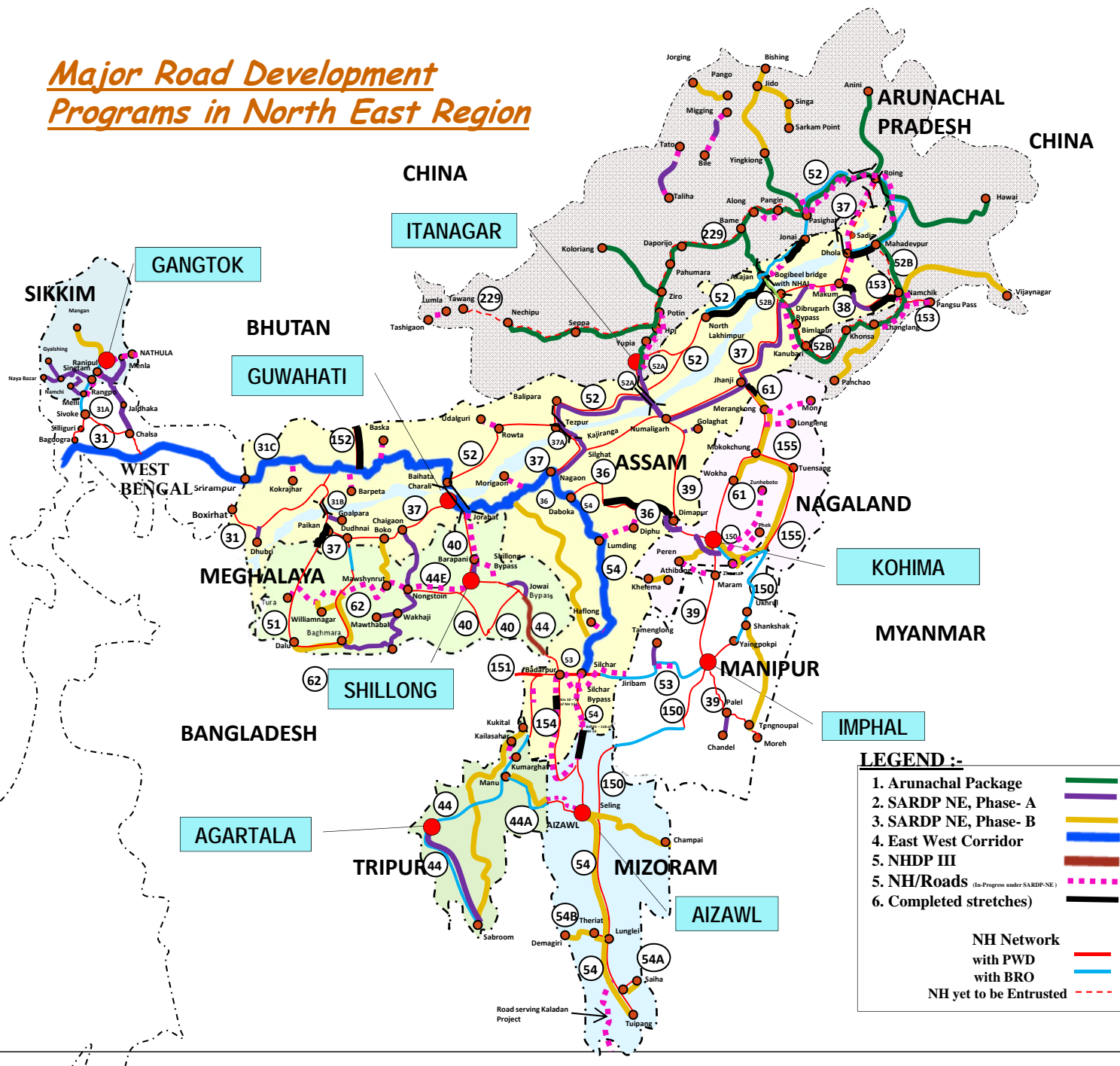
**Ministry of Road Transport & Highways
Government of India**

**ROAD DEVELOPMENT
PROGRAMME IN NORTH
EASTERN REGION**

State wise National Highways and length

State	Total Length of NHs (2002)	Total length of NHs at present (km)	Length under SARDP-NE (km)	Balanc e length (km)	Remarks
Arunachal Pradesh	392	1987	1398	589	Out of 589km, 232km is under China Study group and 357km (NH-52A, NH-52 & NH-315A) under NH(O).
Assam	2836	3068	1305	1763	Out of 1763km, 670km is under NHDP-II as part of East West Corridor and 1093 km under NH(O).
Manipur	954	1317	39	1278	NH(O)
Meghalaya	717	1171	376	795	Out of 795km, 104km is under NHDP-III and 691km under NH(O).
Mizoram	927	1027	221	806	NH(O)
Nagaland	369	494	81	413	NH(O)
Sikkim	62	149	137	12	NH(O)
Tripura	400	400	130	270	NH(O)
TOTAL	6657	9613	3687	5926	

Major Road Development Programs in North East Region



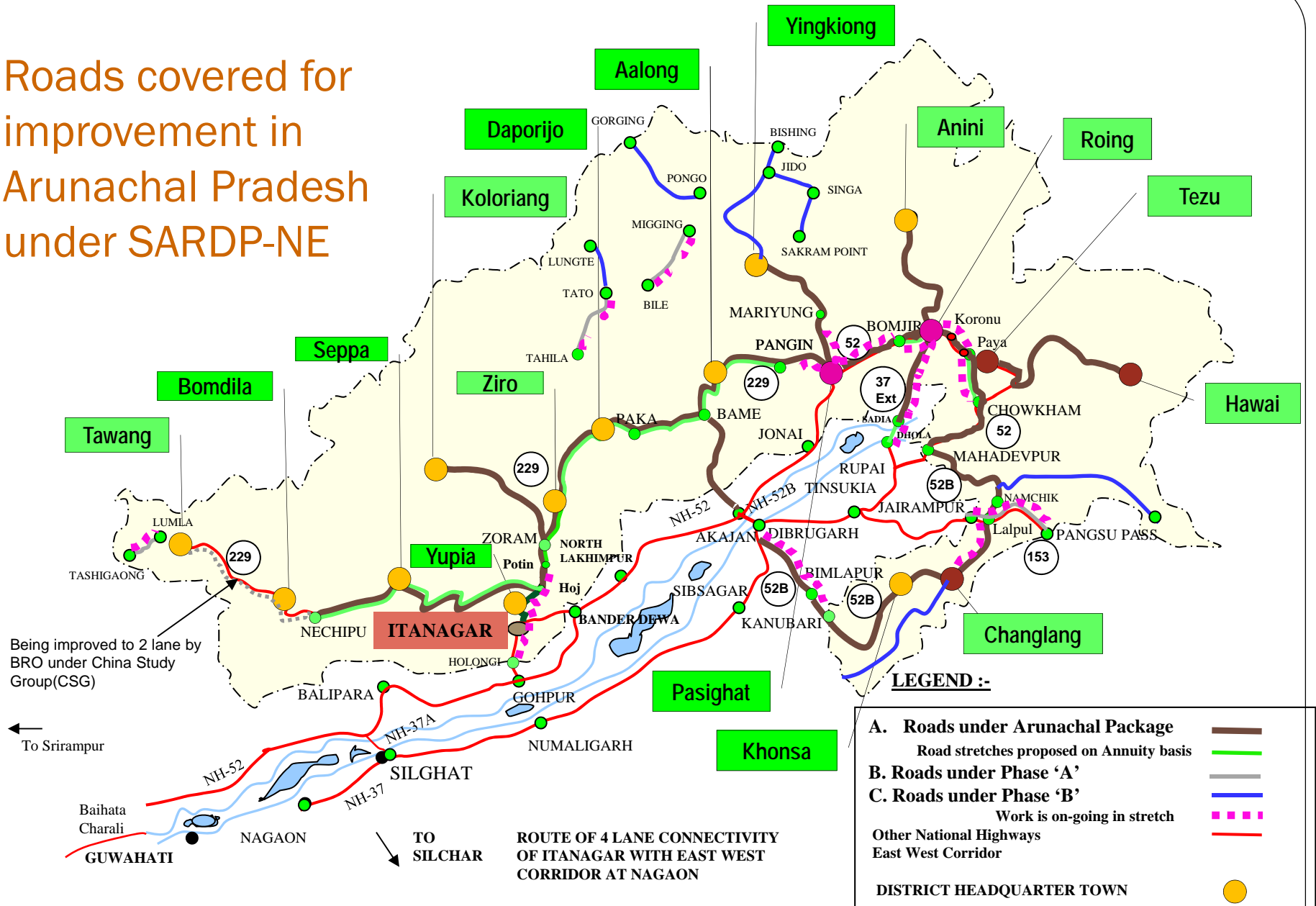
LEGEND :-

- 1. Arunachal Package —
- 2. SARDP NE, Phase- A —
- 3. SARDP NE, Phase- B —
- 4. East West Corridor —
- 5. NHDP III —
- 6. NH/Roads (In-Progress under SARDP-NE) —
- Completed stretches —

NH Network

- with PWD —
- with BRO —
- NH yet to be Entrusted - - -

Roads covered for improvement in Arunachal Pradesh under SARDP-NE



MAJOR ROAD DEVELOPMENT PROGRAMMES IN NORTH-EASTERN REGION

Total length of NH in NE Region	-	9613 km
Improvement of NHs under specific programmes		
1. East West Corridor (NHDP-II)	-	670 km
2. NHDP-III	-	102 km
3. Under SARDP NE Phase A & Arunachal Pkg	-	3687 km
4. Under SARDP-NE, Phase B (yet to be approved)	-	1285 km
5. Remaining length of NHs under Annual Plan		-3869 km

EAST WEST CORRIDOR PROJECTS IN ASSAM (NHAI)

- ❖ Total length in Assam = 670 km
 - Starts from Silchar (km 306.25 of NH-54) and ends at Assam/West Bengal Border (km 0 of NH-31C) Srirampur
 - Passes through Silchar, Maibong, Lumding, Daboka, Nagaon, Sonapur, Guwahati, Nalbari and Bijni
- ❖ Four laning completed = 507 km
- ❖ To be awarded after completion of 2 laning by State PWD (progress 70%) = 31 km
- ❖ Under Implementation = 132 km
- ❖ **Target Date of Completion = December 2014.**

Status of NHDP (III) Projects in Meghalaya (NHAI)

State	NH	Stretch	Length (km)	Cost for 2- laning (Rs. crore)	Remarks
Meghalaya	44	Jowai- Meghalaya/ Assam Border (Ratachhera)	102	390.7	Work awarded on 20 th March, 2012 to M/s Simplex Infrastructure Pvt. Ltd., Kolkatta and concession agreement signed on 05.06.2012. Financial closure is awaited.
Total			102	390.7	

SPECIAL ACCELERATED ROAD DEVELOPMENT PROGRAMME IN NORTH EAST (SARDP-NE)

Objectives of SARDP-NE

- **Upgrade National Highways to 2/ 4 lane;**
- **Connectivity of all 88 District Headquarter by 2-lane road;**
- **Connectivity to backward and remote areas of NE region;**
- **Improve roads of strategic importance;**
- **Improve connectivity to neighboring countries**

SARDP-NE at a Glance

Phase 'A' (Approved for execution)	-	3213 km (Rs 12821 cr)
Phase 'A' (Approved 'In-Principle')	-	886 km (Rs 8948 cr)
<u>Total Phase 'A'</u>	-	4099 km (Rs 21769 cr)
<u>Arunachal Pradesh Package</u>	-	2319 km (Rs 11919 cr)
<u>Total Phase 'A' & Arunachal Package</u>	-	6418 km (Rs 33688cr)
Phase 'B' (Approved for DPR only)	-	3723 km (Rs. 64 crore)
Total of SARDP-NE	-	10141 km (Rs. 33752 cr) (NH 4798km (47%), SR (5343km(53%))

State-wise road length distribution under SARDP-NE

Length in km

STATE	SARDP-NE Phase 'A'			Arunachal Pradesh Package of Roads and Highways			SARDP-NE Phase 'B'			Grand Total		
	NHs	SR/GS	Total	NH	SR/GS/Strtg	Total	NH	SR/GS/Strtg	Total	NH	SR/GS/Strtg	Total
Arunachal Pradesh	52	212	264	1346	835	2181	0	931	931	1398	1978	3376
Assam	1179	177	1356	126	12	138	0	285	285	1305	474	1779
Manipur	39	166	205	0	0	0	0	202	202	39	368	407
Meghalaya	259	526	785	0	0	0	161	201	362	420	727	1147
Mizoram	221	100	321	0	0	0	416	272	688	637	372	1009
Nagaland	81	350	431	0	0	0	622	169	791	703	519	1222
Sikkim	80	505	585	0	0	0	0	68	68	80	573	653
Tripura	130	22	152	0	0	0	86	310	396	216	332	548
Total	2041	2058	4099	1472	847	2319	1285	2438	3723	4798	5343	10141

Progress of SARDP-NE

Item	Phase 'A'			Arunachal Package		
	Item rate	In principle incl. BOT	Total	Item rate	Hybrid BOT (Annuity)	Total
Total Length (Estimate cost)	3213 km (Rs 12821 cr)	886 km * (Rs 8948 cr)	4099 km (Rs 21769 cr)	1543km (Rs 6808 cr)	776 km ** (Rs 5111 cr)	2319 km (Rs 11919 cr)
Works sanctioned/ awarded	2373Km (O=Rs 9740cr) (R=Rs 10403cr)	132 Km (O=Rs 1026cr)	2505Km (O=Rs 10766 cr) (R=Rs 11429 cr)	566 km (O=Rs 2710 cr)	775 km (O=Rs 8374 cr)	1341 km (O=Rs 11084 cr)
	3846 km (Rs 22513 cr)					
Roads completed	1177 km	69 km	1246 km	113 km	Nil	113 km
Target for completion	March, 2017					

*Out of 886 km NHAI is implementing 454 km on BOT (Annuity) and MoRT&H /BRO/PWD is implementing 432 km

** 776 km , MoRTH is implementing on Hybrid BOT (Annuity)

Performance of SARDP-NE

Year	Sanctions/ Award		Length completed (km)	Financial (Rs. Crore)	
	Length (km)	Cost (Rs in crore)		Allocation	Expenditure
2006-07	501	1330	Preliminary	550	450
2007-08	240	648	150	700	652
2008-09	187	900	290	1000	637
2009-10	188	1103	156	1200	676
2010-11	1615	11676	146	1500	1065
2011-12	983	5825	150	1950	1940
2012-13	69	349	260	2000	1822
2013-14	64	682	207	3300	1714
Total	3846	22513 i/c Pre-constru..., RE & Consultancy	1359	12055	8956

SARDP Phase A including Arunachal Package	Eleventh Five Year Plan (2007 – 12) (Rs. Cr)		Twelfth Five Year Plan (2012 – 17) (Rs. Cr)	
	Allocation	Exp	Projected Allocation	Allocation provided
		6,350	4,970	37,334

Allocation and Expenditure for Development of National Highways in NE Region

Amount in Rs. crore

Year	Non-NHDP NHs		SARDP-NE (initiated in 2006-07)	
	Allocation	Exp	Allocation	Exp
2002-07	909	892	550	450
2007-12	1580	1434	6350	4970
2012-13	587	299	2000	1822
2013-14	382	159	3300	1371

PRESENT PROGRESS OF MAJOR ONGOING ROAD DEVELOPMENT PROGRAMMES IN NORTH-EASTERN REGION

Length in km

Programme	Total Length	Length Completed	Length under Implementation
NHDP – II (East – West Corridor)	670	507	132
SARDP NE Phase A	4099	1246	1259
Arunachal Package	2319	113	1228
NHDP – III	102	-	102

Quarterly Targets for 2013-14 for SARDP-NE including Arunachal Pradesh Package.

Sl. No.	Description	Item	Performance in 2012-13	Cumulative upto 31.3.2013	2013-14 (cumulative)			
					Qrt 1	Qrt 2	Qrt 3	Qrt 4
1	Sanction of works	Target	1980	6702	131	450	815	2000
		Achievement	69	3783	56	64	-	-
2	Award of works	Target	1991	6702	131	450	815	2000
		Achievement	57	3771	56	64	-	-
3	Completion of construction	Target	300	1282	0	25	150	550
		Achievement	260	1152	31	40	175	207 (as on Jan 2014)

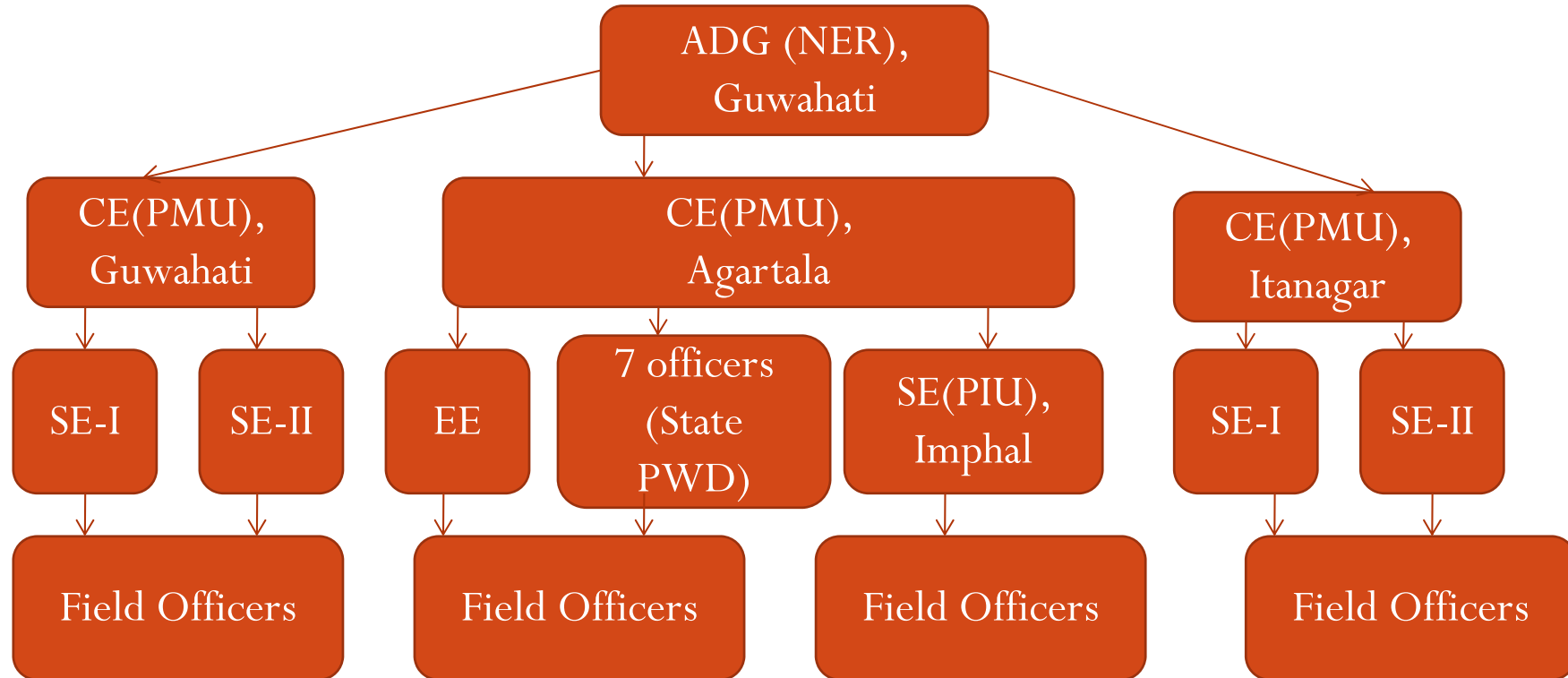
Works likely to be awarded during 2013-14

**Road Length for which RFP invited
(Dec, 13/ Jan, 14) : 167 km**

**Road Length for which RFP to be invited
(Feb,14/ March, 14) : 350 km**

Road Length for which RFQ invited : 925km.

PMU and Monitoring mechanism



Issues requiring attention of State Governments

Issues	Action to be taken by States / NHAI.
<input type="checkbox"/> Poor Project preparation.	Pro-active involvement of PWD / NHAI field officers with consultants from inception
<input type="checkbox"/> 90 % land availability, a prerequisite for EPC projects	State support required for advance availability of land to enable invitation of RFP.
<input type="checkbox"/> Forest and Environmental clearances	Forest and Environmental clearances, which are pre-requisite for execution of works needs to be expedited.

Issues requiring attention of State Governments – Contd..

Issues	Action to be taken by States / NHAI.
--------	--------------------------------------

- | | |
|---|---|
| <input type="checkbox"/> Delay due to poor performance of contracting agencies. | State PWD /NHAI to take penal action against defaulting Contractors and ensure timely completion. |
| <input type="checkbox"/> Preparation of Tender documents | Tender Document to be prepared with due diligence by PWD to avoid Contractual Complication. |
| <input type="checkbox"/> Disposal of muck | Designated dumping site to be finalized before award of work. |
-

Thank You